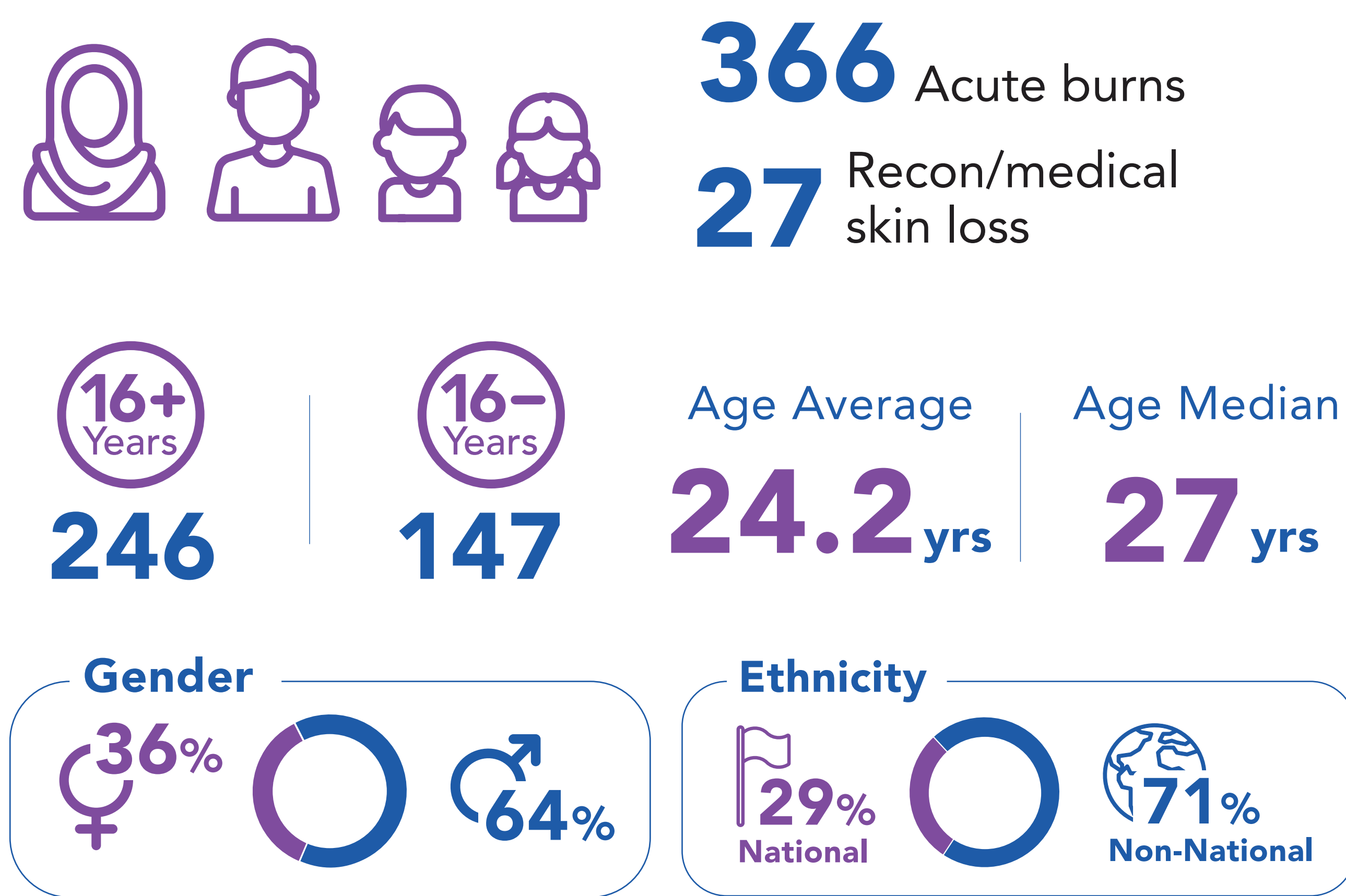
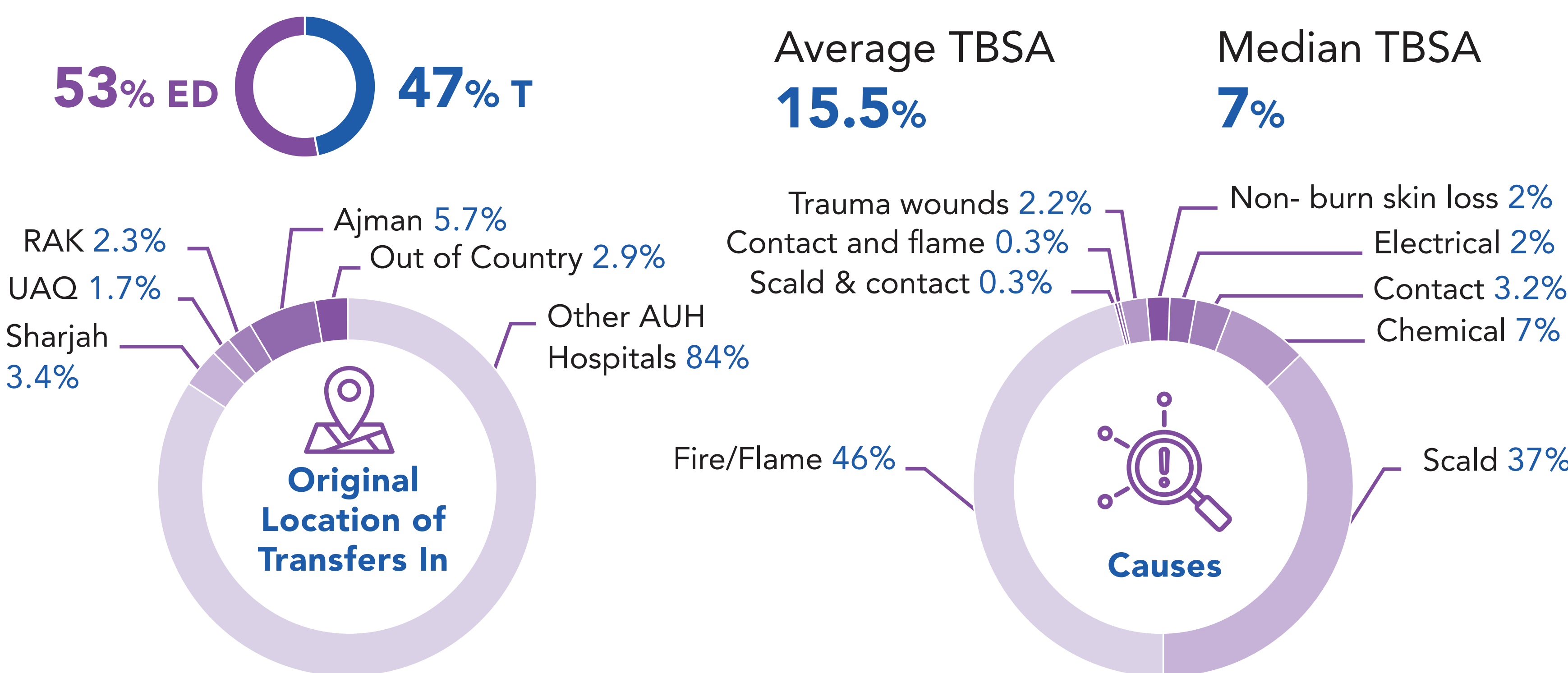


Who did we see?

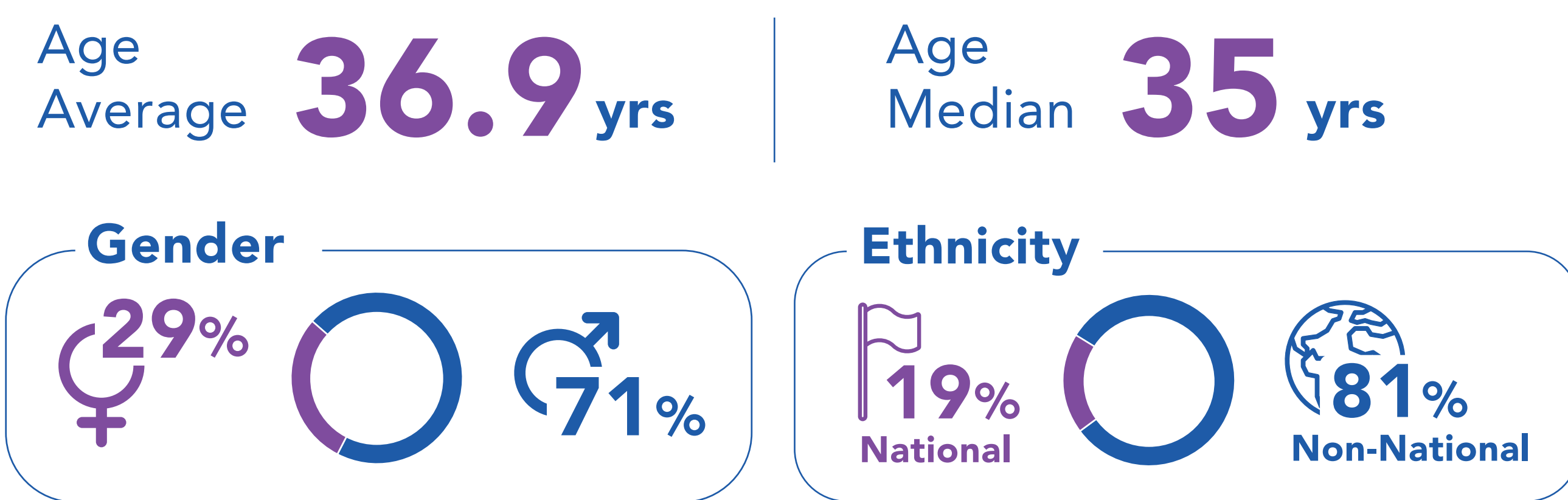


Why did they see us?

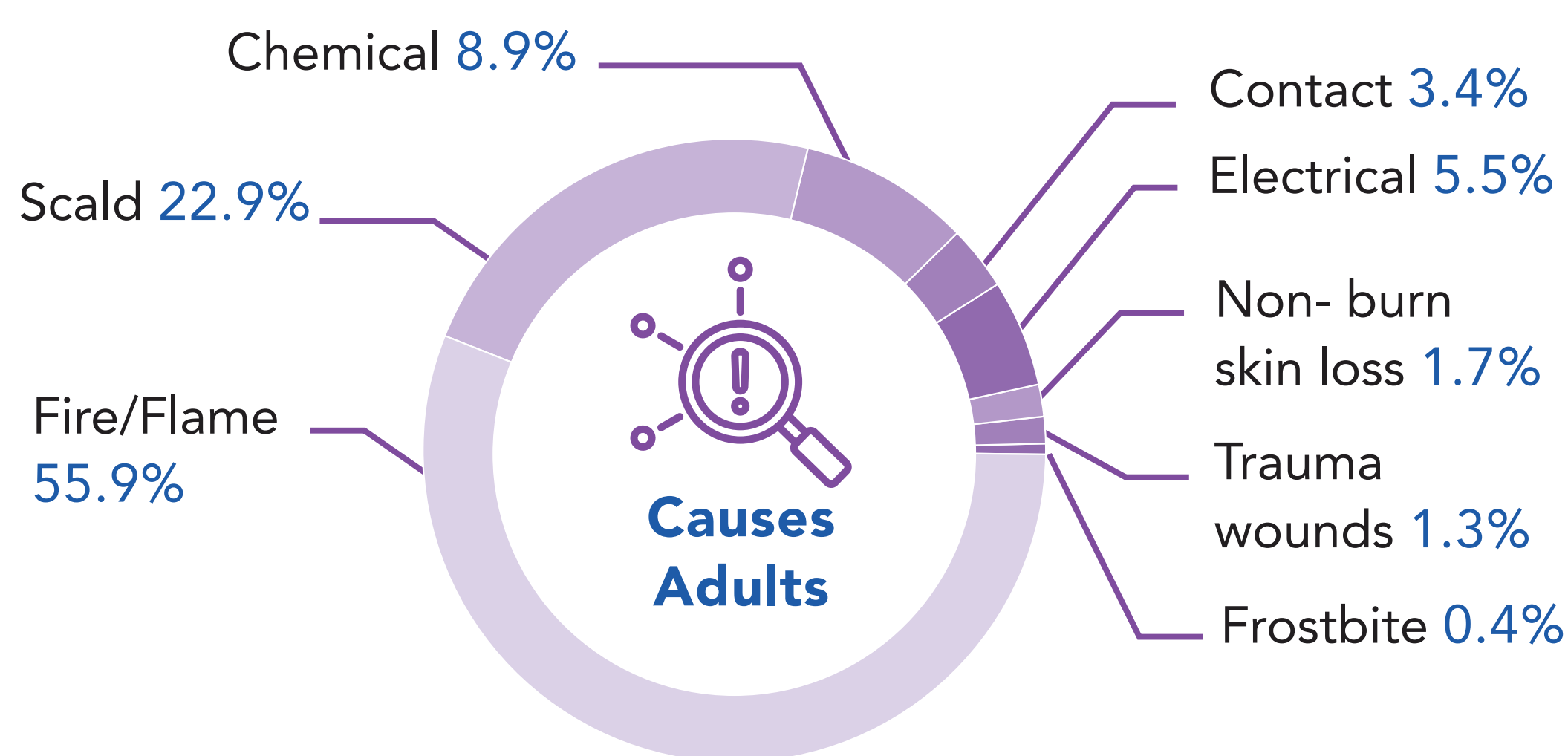
Awarded Burns Centre of Excellence for Abu Dhabi  
Transfers in vs Immediate SSMC ED



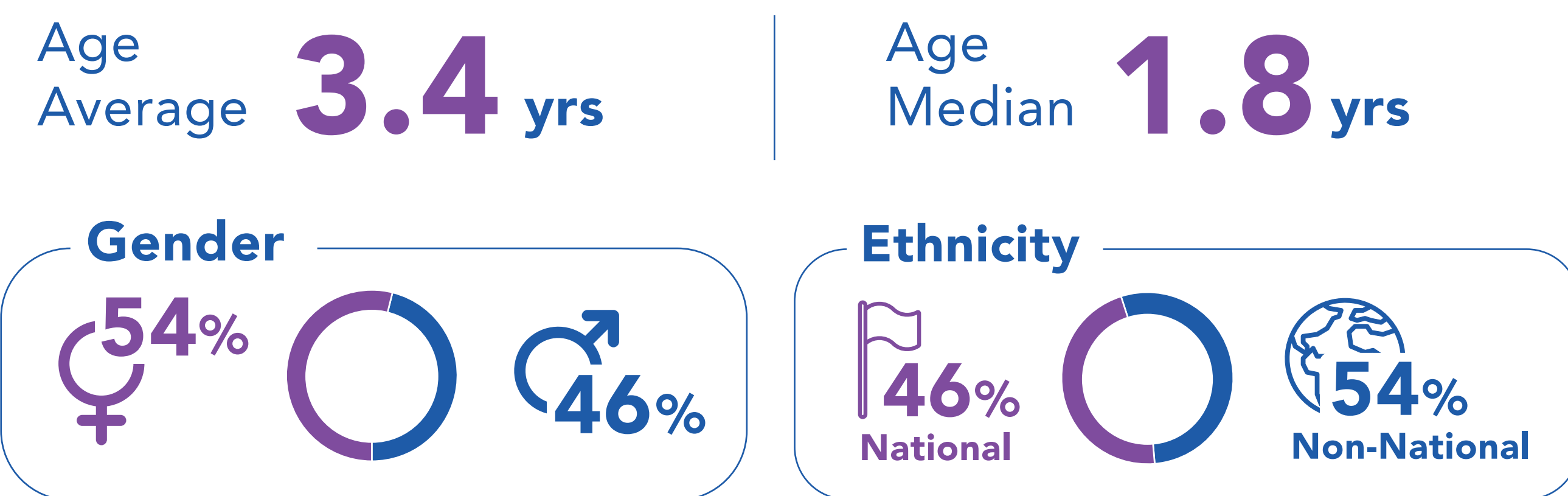
Over 16 years of age



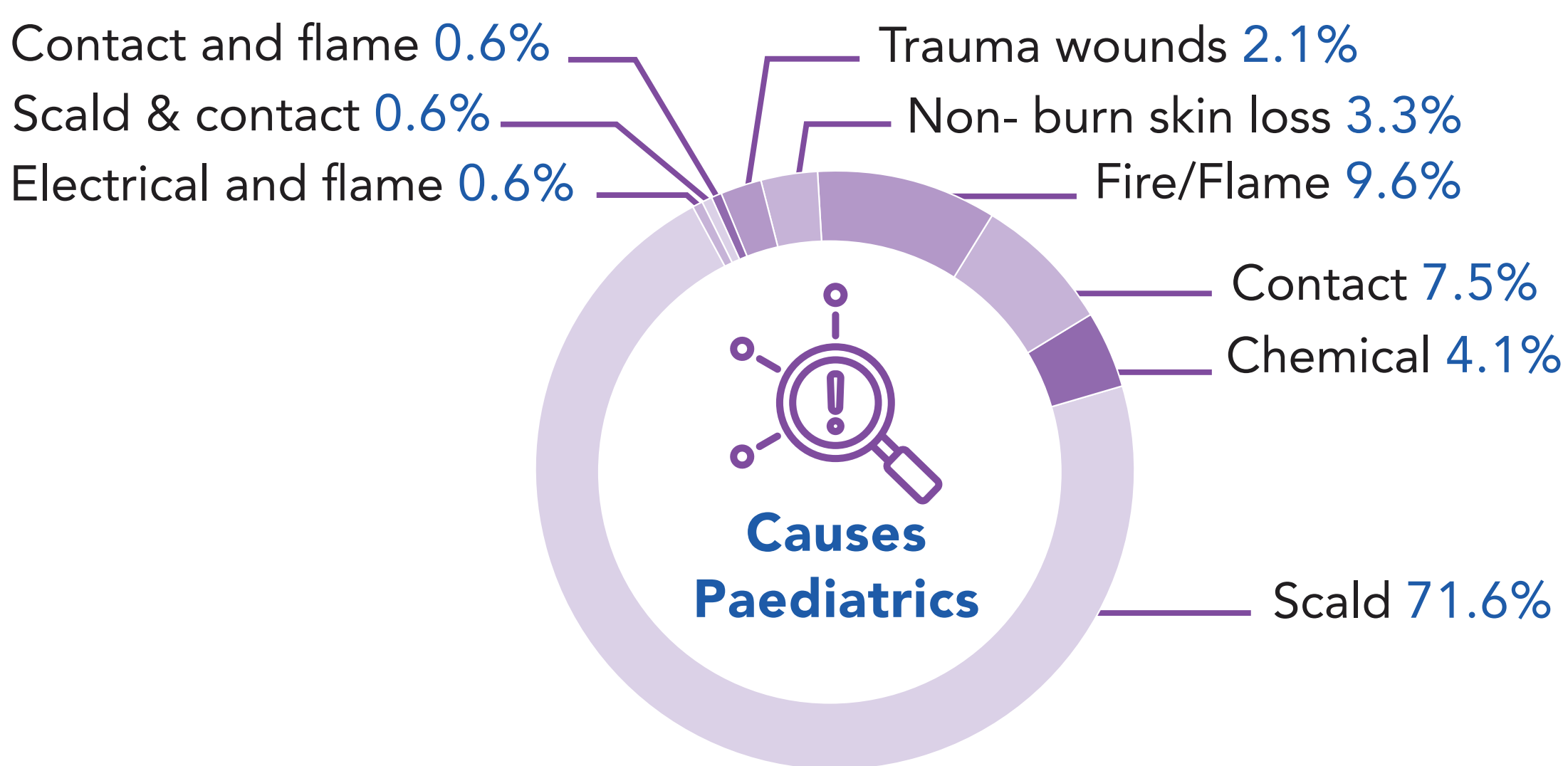
Percentage of patients  
**>20% TBSA - 24%**  
Average TBSA - **19%**  
Median TBSA - **10%**



Under 16 years of age



Percentage of patients  
**>20% TBSA - 4%**  
Average TBSA - **7%**  
Median TBSA - **5%**



What were the outcomes?

- ✓

Satisfaction
- \*Nursing Care


98.5% Satisfied or Very Satisfied
- \*Physician Care


97.5% Satisfied or very Satisfied
- \*\*Rehabilitation Care

100% Good or Very Good
- \*Plan of Care (knowledge & involvement)

93% Agree
- \*Environment (including food)

93% Satisfied or Very Satisfied
- \*100 respondents (27% of admission volume)
- \*\*19 respondents

 **87%**  
Discharged Home

 **Length of Stay/TBSA**  
(patients **>20% TBSA**)  
**0.9 days/%TBSA**

 **Average Length of Stay**  
(discharged alive and excluding LAMA)  
**= 15.7 days**