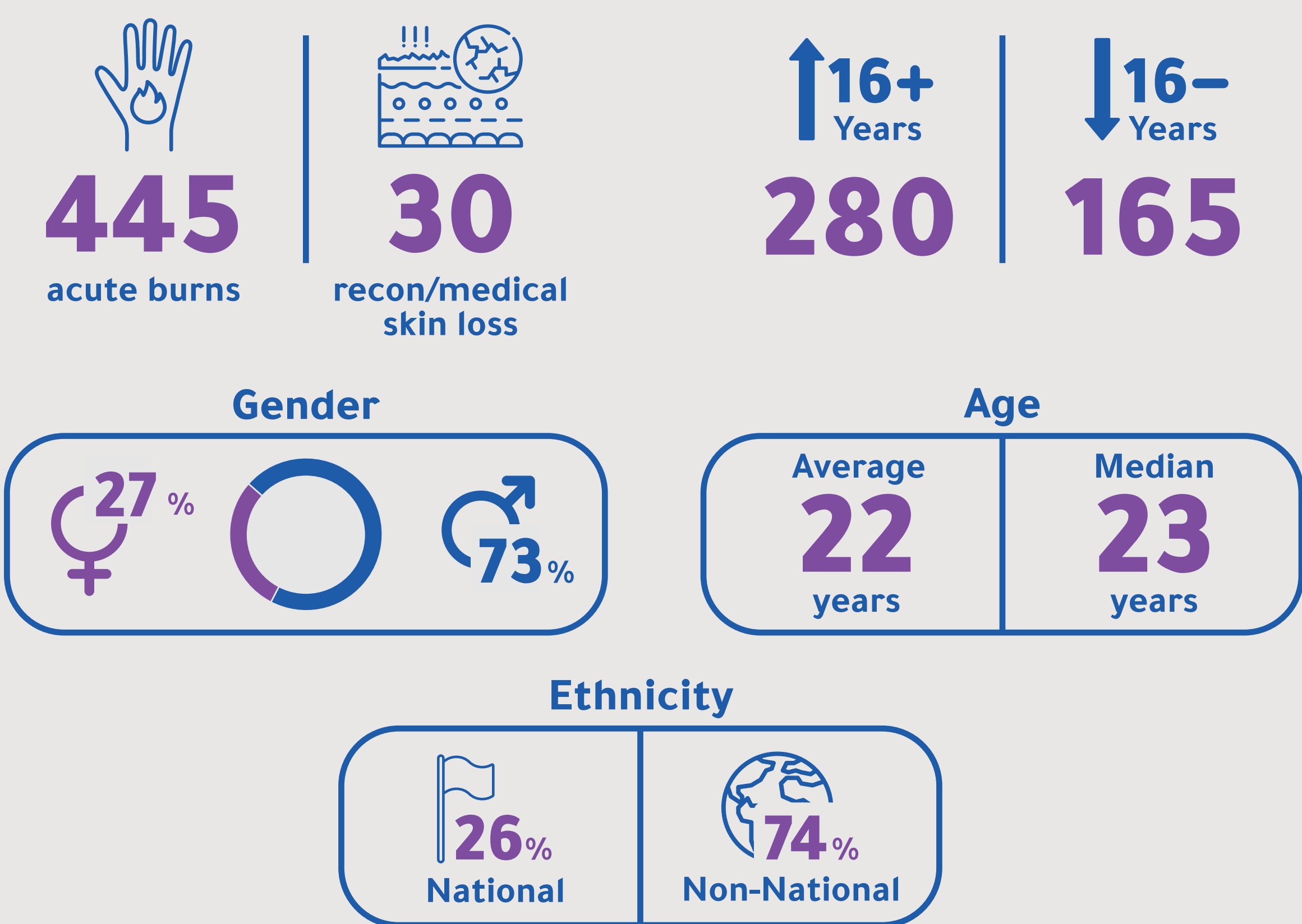
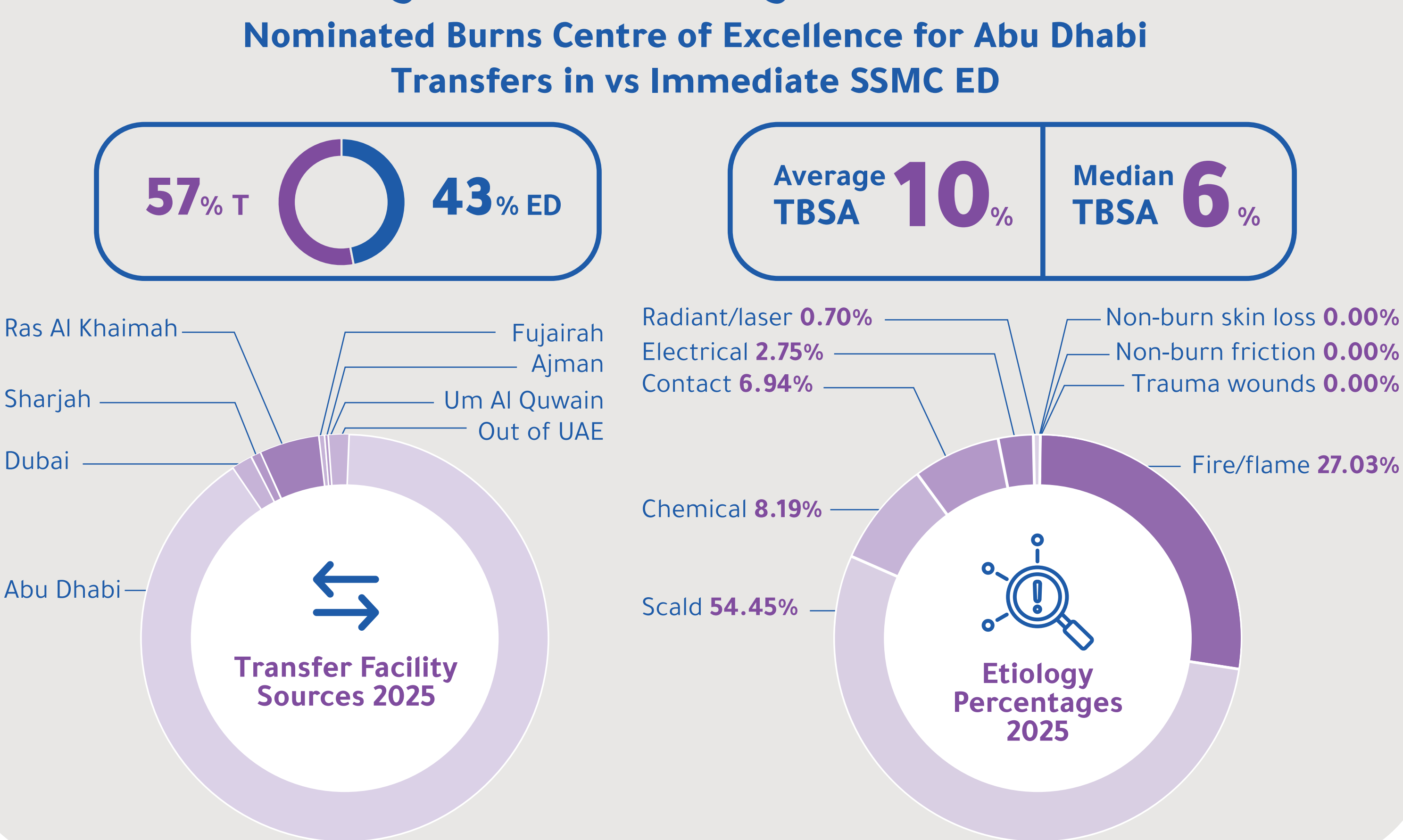


Who did we see?



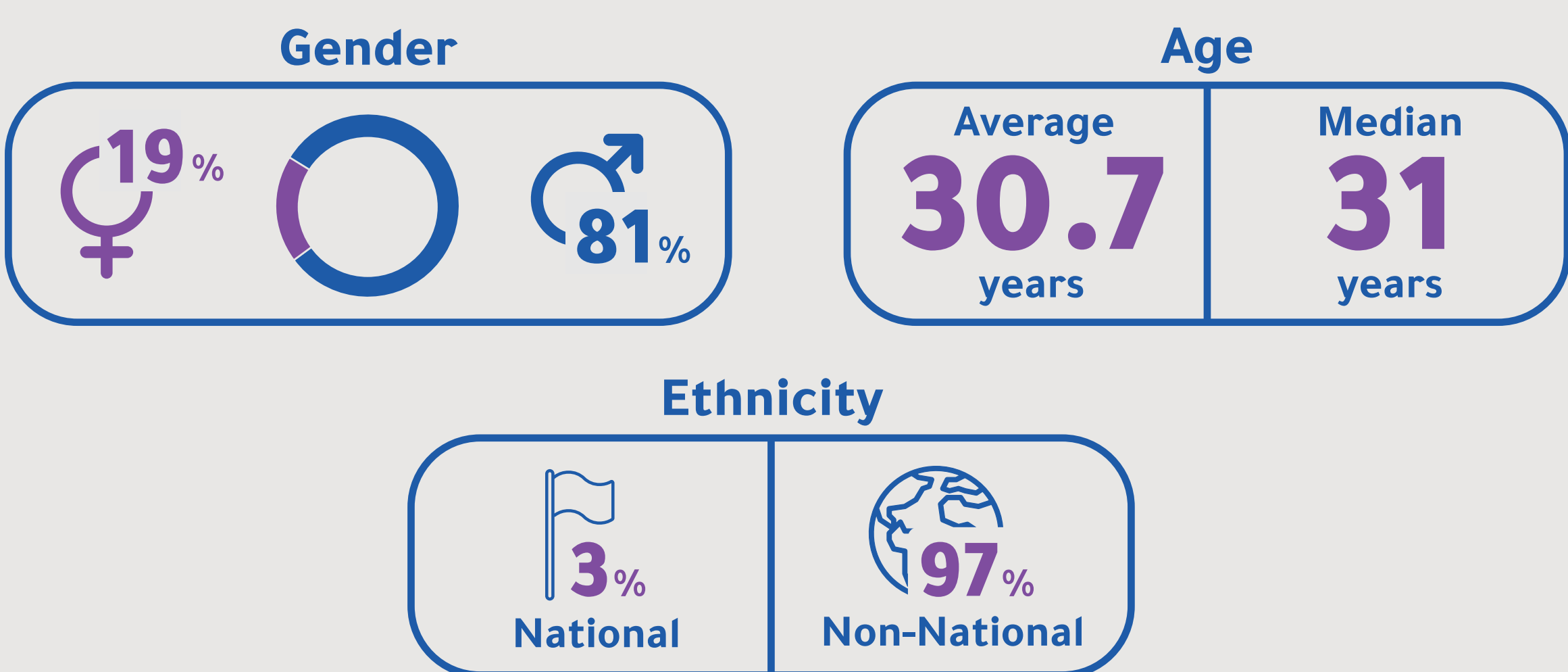
Why did they see us?



What were the outcomes?



Over 16 years of age

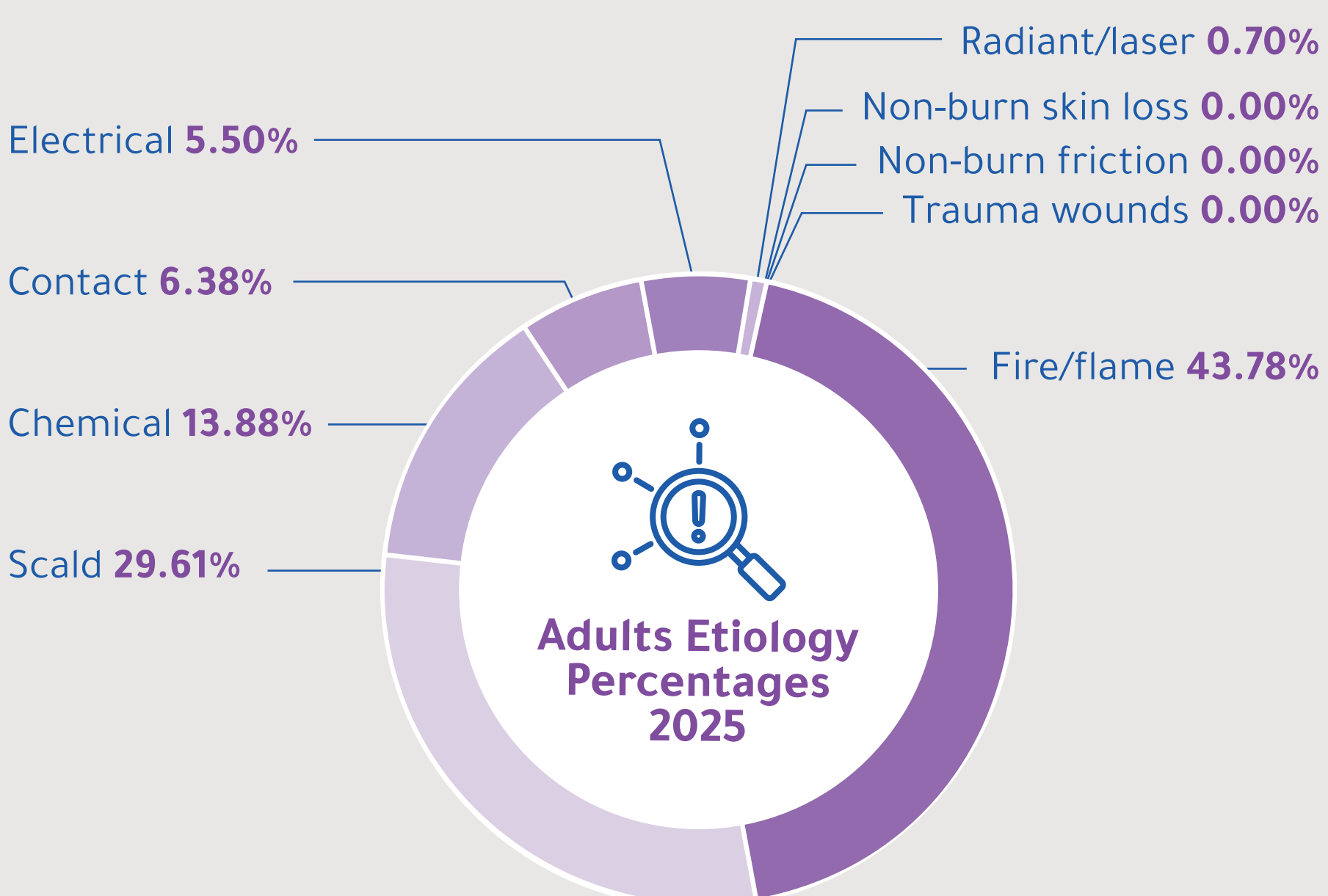


Percentage of patients

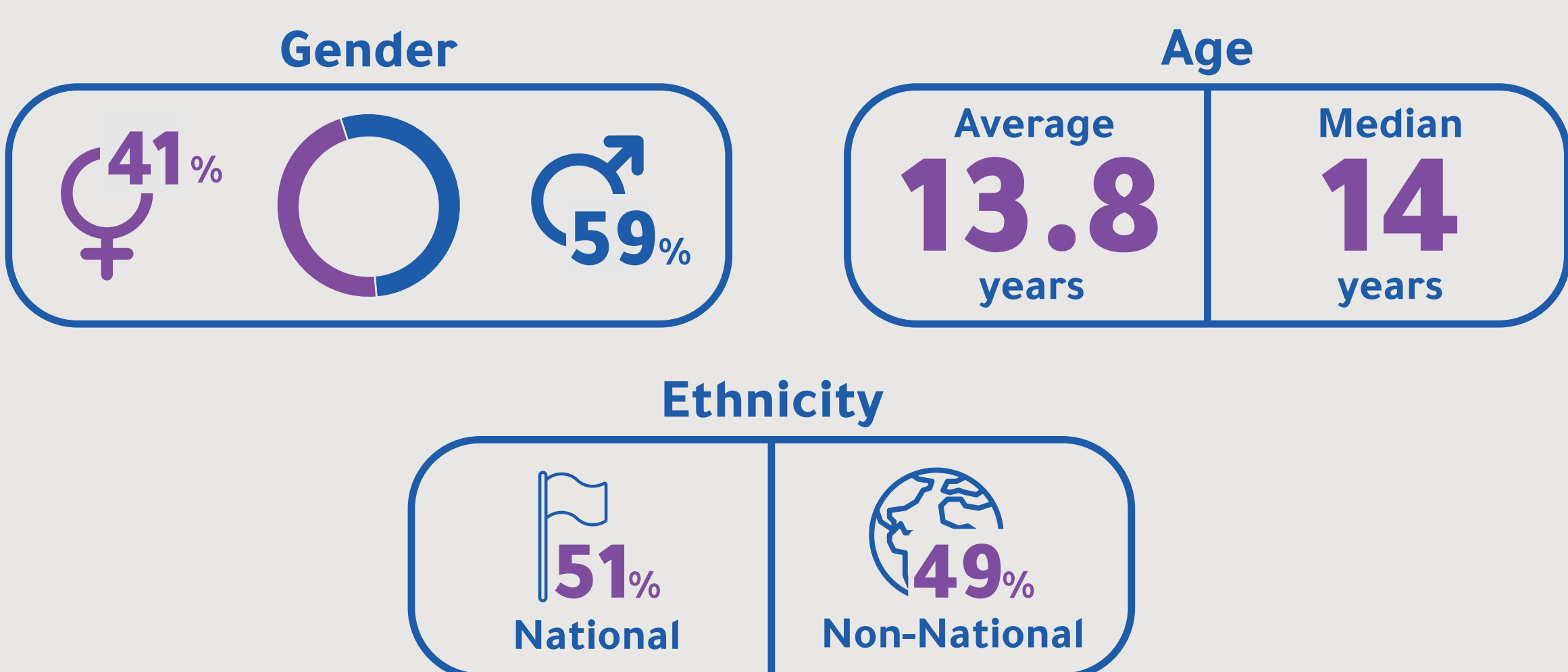
>20% TBSA - 14%

Average TBSA - 13%

Median TBSA - 5%



Under 16 years of age

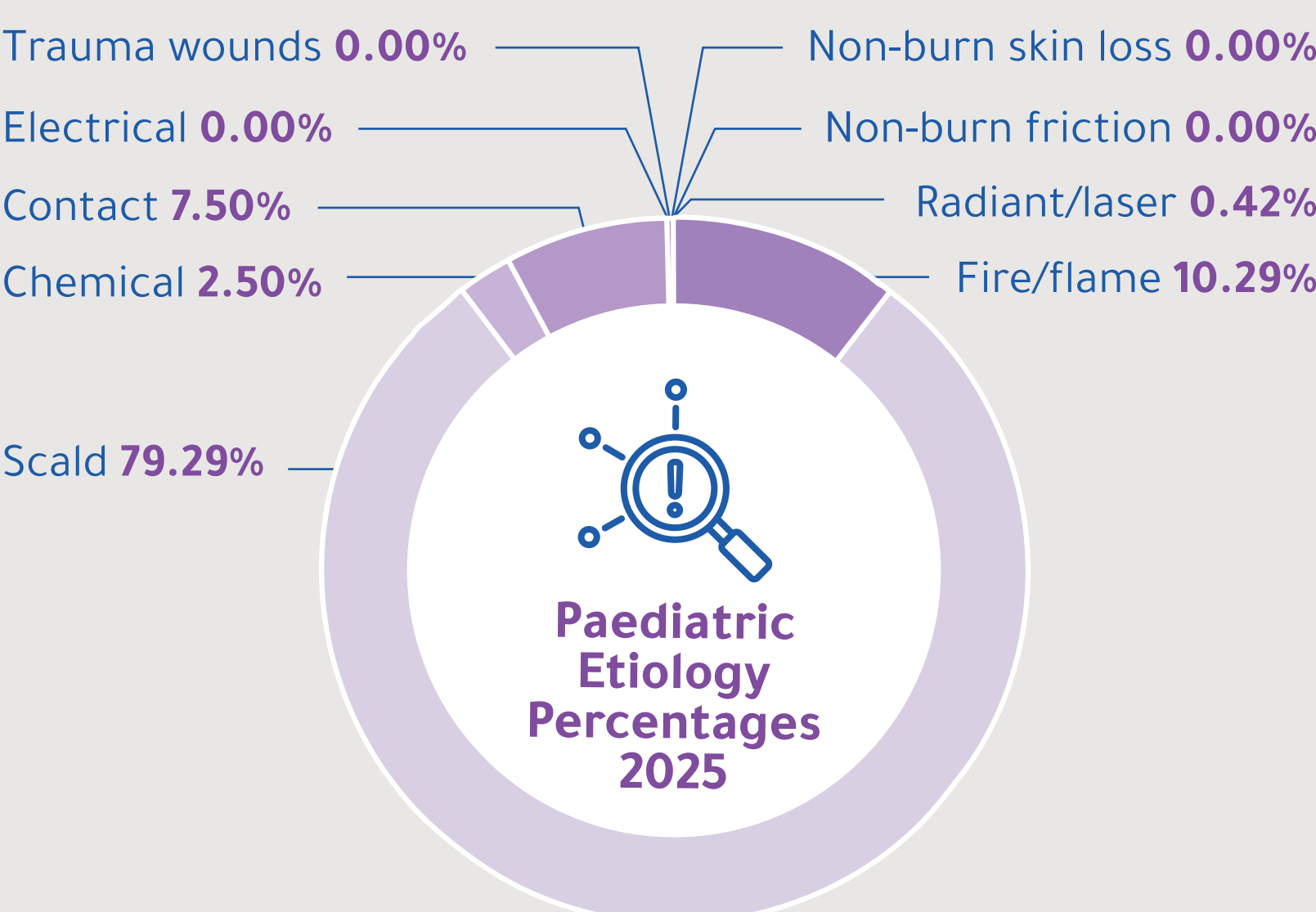


Percentage of patients

>15% TBSA - 26%

Average TBSA - 6%

Median TBSA - 5%



95% Discharged

Length of Stay/TBSA (patients >20%TBSA)
1 days/%TBSA (excluding BTM)

Average Length of Stay (discharged alive and excluding LAMA) 14.2 days